

What's Brewing

Fall 2011:
Volume 8, Issue 1



A Message from Our Head of School, Donna Kennedy

Feeling the STRESS yet? Every year, when it comes time to write the fall newsletter, I feel the city start to buzz with holiday excitement; who am I kidding, that buzz happened months ago when I saw Christmas decorations up in

September. As we bombard our senses with everything the holidays bring, there often is an increased level of stress hanging over us like a heavy fog that gradually lowers until it surrounds us like a thick soup and we find ourselves hoping for spring to clear the air. How timely then to have author Kelly Corrigan come to speak at our Sixth Annual Ladies' Luncheon to talk about the role that stress plays in our lives. We have had some amazing speakers over the years but I have to say that Kelly is one of the most down-to-earth, practical and humorous speakers I have ever encountered. As anyone who knows me is aware, it isn't particularly hard to move me to tears, and I enjoy a good laugh, but it truly is a gift to have a room laughing and crying at the same time. Kelly can do this. She shared readings from her *New York Times* bestsellers, "The Middle Place" and "Lift." While stories move us in many ways, it was Kelly's description of the title of her book "Lift" that still has me thinking:

"Lift takes its name from hang gliding, a pursuit that requires flying directly into rough air, because turbulence saves a glider from "sinking out." For Corrigan, this wisdom—that to fly requires chaotic, sometimes even violent passages—becomes a metaphor for all of life's most meaningful endeavors, particularly the great flight that is parenting."

As we move into the turbulent months ahead, make sure to find that space that allows you time to breathe and take it all in. Take time to enjoy your families and friends and remember to tell them how much you care about them.

Have a wonderful Holiday Season.

**Executive Director
Head of School**
Donna Kennedy

Assistant Head of School
Milt Sleeter

Board of Trustees

Laura Bilicic
Mark Hickson
Donna Kennedy
Lawrence Leighton
Pat Russo
Henry B. Schacht
Mame Kennedy Schragger
Jim Shipp
Clea Newman Soderlund
Paul Tagliabue
Kathryn George Tyree
John Vogelstein

Inside this issue:

Fall Family Fun Day	6
Grandparents' Day	4
Important Dates	2
Ladies' Luncheon	3
Opening of School	4
Parents' Association	2
Summer Art and Science Exhibit	5



A Strong Start to the Fundraising Year!

We held a very successful parent phonathon on November 7th, raising nearly \$30,000, and bringing participation to 70% in pledges and gifts. The Coconut Trees reached 100%; followed by the Willow Trees with 90%; the Cherry Trees and Palm Trees with 80%; the Bonsai and Redwood Trees with 70%; the Maple Trees with 60%; the Gingko Trees with 50%; and the Banyan Trees with 40%.

We apologize for the following errors in the 2010-2011 annual report:

- The Quasars should have been listed as the Hawks.
- Frank Uzzo and Laura Uzzo should have been listed as two separate donors.
- Morgan Stanley Matching Gift Program should have been listed as a donor.



Note from the Parents' Association Co-Chairs



A warm hello and happy fall to the GBS community!

We are delighted to be serving together again as Co-Chairs of the Gillen Brewer Parents' Association. This is Fern's third year as Co-Chair; her sons Jacob and Joshua are in the Banyan Tree and Palm Tree classes, respectively. It's Holly's second year in the role; her son Benjamin is in the Banyan Trees as well. We are so glad to be working with you all toward a fun-filled and successful year!

This fall has already proved to be an exciting one, filled with some favorite annual events. Grandparents' Day and the Fall Family Fun Day were, as always, a very special part of the year and a wonderful opportunity for GBS families to share in the excitement of the season. The Ladies' Luncheon and the Thanksgiving Feast were a great success thanks to the GBS community. Thank you to all of our parent and staff volunteers for your valuable time and effort! We greatly appreciate your support.

Fall also marks the start of our Annual Appeal, a critical part of our fundraising efforts for the school. Funding from the state only covers a portion of the cost of maintaining the incredible programs Gillen Brewer offers, including art, music, science, sports, technology and more. We look forward to your help in reaching our goal of 100% family participation this year. The annual auction is another important step toward this goal: last year's auction raised approximately \$330,000, and we are counting on your support to do even better in 2012!

As always, if you would like to learn more about our events and what's happening in our school community, please visit www.gillenbrewer.com.

Warm regards,

Holly Berfield and Fern Robles

Mark Your Calendars!

December 5-9	Parent Conferences
December 12-16	Parent Conferences
December 24-January 2	Holiday Break
January 3	School Reopens
January 16	School Closed (Martin Luther King, Jr. Day)
February 5	Winter Family Fun Day
February 13	Bus Driver and Matron Appreciation Day
February 18-26	Winter Break
February 27	School Reopens
March 8	Noon Dismissal (Staff Development)
March 14	VIP Day
March 19	School Closed (Staff Development)
April 7-15	Spring Break
April 16	School Reopens
	Fundraiser with Autism Speaks
May 1	Spring Auction
May 9	Noon Dismissal (Staff Development)
May 16	Noon Dismissal (Staff Development)
May 21-25	Parent Conferences
May 28	School Closed (Memorial Day)
May 29-June 1	Parent Conferences
June 4	Alumni Panel
June 11	Noon Dismissal (Staff Development)
June 19	Achievement Ceremony (tentative)
	Last Day of School



Sixth Annual Ladies' Luncheon "The Role of Crisis in Our Lives"

November 17th brought the Sixth Annual Ladies' Luncheon, featuring *New York Times* bestselling author Kelly Corrigan. She is the author of "The Middle Place," about her experience with cancer and then her father's subsequent diagnosis with cancer, and "Lift," written as a letter to her children. The enthusiastic crowd of over 110 parents, alumni parents and friends of the school was alternately touched by her insights and memories, and moved to hysterical laughter by her never-ending wit and upbeat storytelling. Co-Chairs Laura Billicic, Corinne Buckalew, Catherine Coakley, Leslie Johnson and Kathryn Tyree worked tirelessly to make the event a success, and Colony Club made a perfect setting. The event raised over \$40,000 for the school.



Speaker Kelly Corrigan, above, and Gillen Brewer parent, Holly Berfield, below, who spoke briefly about her son's experience at the school



From left to right above: Corinne Buckalew, Laura Billicic, Head of School Donna Kennedy, Kelly Corrigan with her daughter Georgia, Catherine Coakley, Kathryn Tyree and Leslie Johnson



First Day of School



Emilio and Ari build together during choice time.



Max enjoys a book on the class beanbag



Joe walks Gianni into school



Aneis explores the new toys in his classroom



Noam of the Willows classroom Paints with a willow branch

Grandparents' Day



Maddux reads a story with his grandparents



Aidan shares his classwork with his grandparents



Yianni's grandparents visit the Willow Tree Room



Kayla and her special guests



Rafael was very excited to have his grandmother visit from Brazil



Dominick introduces his special guest to the Cherry Tree classroom



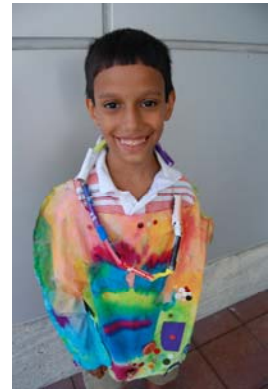
Rosie talking about the circus



Tote bag designs



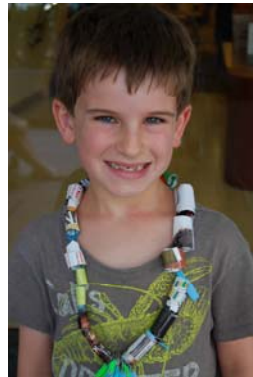
Orli with her class circus



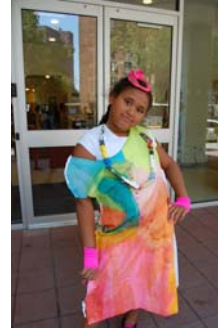
Jeremy in the shirt he designed



Screenprinting by the oldest classes



Benjamin's necklace made from recycled magazine pages



Shayna's dress made from a pattern and painted with fabric paint



Preschool collage

Summer Art and Science Exhibit

This past August the Gillen Brewer School hosted its Fourth Annual Art and Science Exhibit. The program was held at the school and presented an opportunity for each child to show off what he or she had been learning in science and art classes.

In science, the Hawks and the Eagles designed, built and programmed their own robots. From unpacking and organizing the new Lego Mindstorms kits, to using laptops to create their own programs for their robot, each team was responsible for their own project from start to finish.

The art classes had a textile focus this summer, and each child experimented with various ways to use textiles: from screen printing, to batik, to puppetry. The preschool and Squirrels classes created their own circus performers and circus tents using fabrics and found objects. The Eagles learned about pattern-making and designed and created their own shirts and dresses and recycled jewelry.

Thank you to the Danny Jordan Fiddle Foundation for supporting our arts and sciences.



Linda Delaney with Fred Fiddle



Kaitlyn watching a robot run its program



Above left: Christian with his robot creation

Above right: Joshua playing with a robot



John studying his robot's behavior



Matthew and Seamus using a laptop to program a robot



Left: Julian taking time away from his robot to pose for a family photo



Fall Family Fun Day





The Gillen Brewer School
 410 East 92nd Street
 New York, NY 10128
 Phone: 212-831-3667
 Fax: 212-831-5254
 Donate online at www.gillenbrewer.com

*The 2011-2012 Annual Appeal ends June 30, 2012.
 Thank you for your generosity!*

I wish to support Gillen Brewer in the following capacity:

- Founders Circle:** \$50,000 and up
- Community of Learners:** \$25,000 to \$49,999
- 15+ Association:** \$15,000 to \$24,999
- Mattie Gillen & Virginia Brewer Sponsors:** \$10,000 to 14,999
- Director's Circle:** \$5,000 to 9,999
- Benefactor:** \$2,500 to 4,999
- Patron:** \$1,500 to 2,499
- Sustainer:** \$500 to \$1,499
- Contributor:** \$1 to \$499

Amount I wish to donate: \$ _____

A check made payable to The Gillen Brewer School is enclosed.

Please charge my credit card:

Card Number _____

Name on Card _____ Expiration Date _____

Signature _____

My employer has a matching gift program; the form is enclosed.

Please contact me about making a gift of appreciated stock, a donation to a memorial fund or a bequest or deferred gift to the school.

This gift is in ___ honor ___ memory of _____

Please notify the following person of my gift:

Name _____

Address _____

City _____ State _____ Zip _____

Name (as it should appear in our Annual Report): _____

I prefer to be listed anonymously.

Mailing address:

Street _____

City _____ State _____ Zip _____

Phone _____ Email _____



The Gillen Brewer School is exempt from taxation pursuant to Section 501(c)(3) of the Internal Revenue Code and contributions to it are tax deductible to the full extent of the law. In the event of questions, please contact Penny Arnold at 212-831-3667 x207 or penny@gillenbrewer.com.

Please address comments, corrections or address changes to 212.831.5667 x207 or development@gillenbrewer.com.
Please think of the environment and contact us at development@gillenbrewer.com
to receive your newsletter by email instead of regular mail.



The Gillen Brewer School
410 East 92nd Street
New York, NY 10128



Save the date
for our annual auction!
Tuesday, May 1, 2012